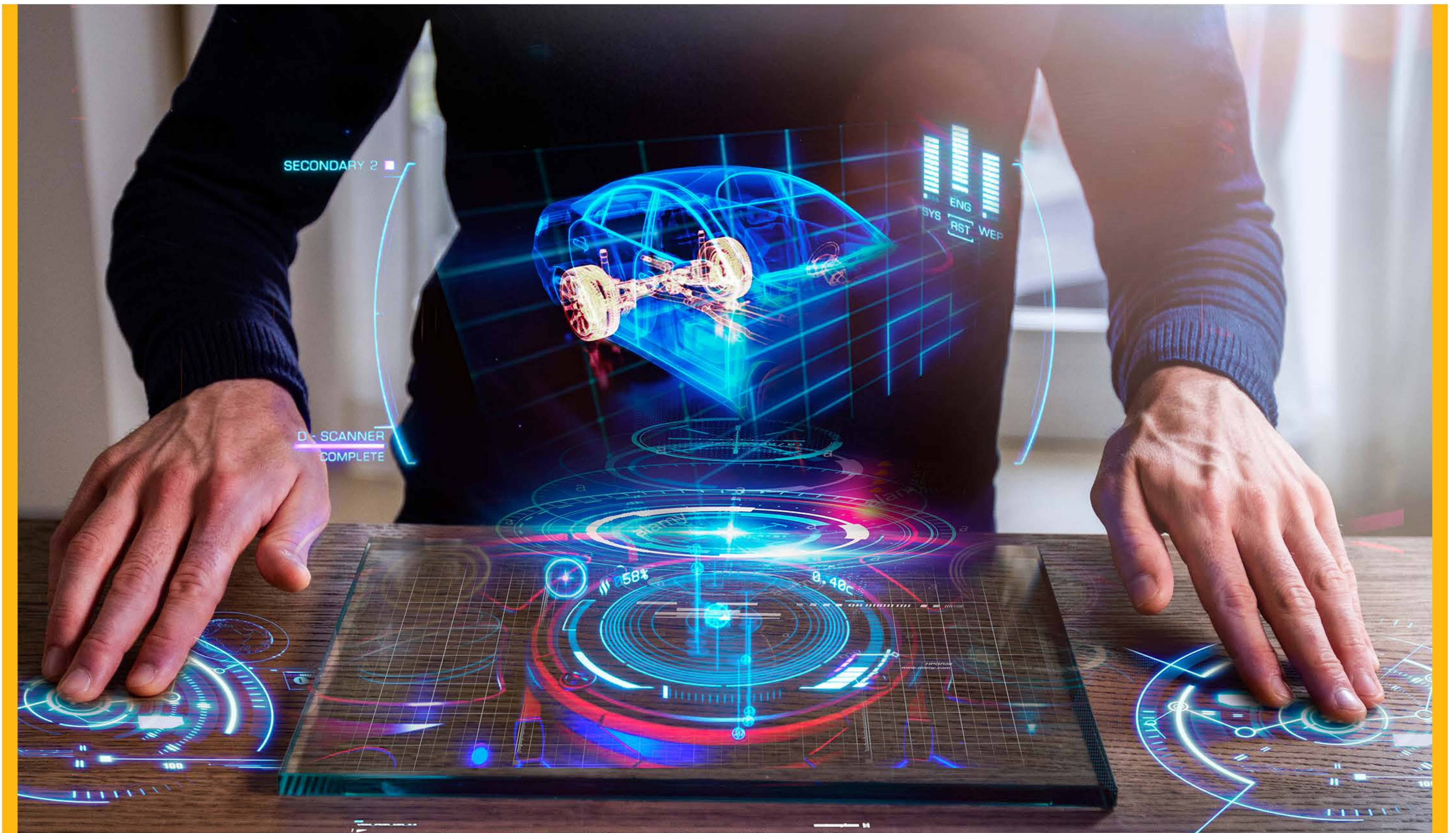


# Workflow for Automobile Manufacturing company



## Customer's Introduction

This customer is a wholly owned subsidiary of Europe based parent company having its manufacturing facility located in Chennai, with a capacity of 4.5+lacs units per annum with 3 shifts per day.

## Problem Statement

1. Manual vendor on boarding activity (involving several levels of approvals in sequential order) resulting in too much of time delay in entire process.
2. Manual invoice processing resulting into:
  - a. Considerable time delay in processing invoices
  - b. Human errors converting into revenue leakage
  - c. Missing of physical invoices and its associated supporting documents
  - d. Difficult to make / maintain comments on physical invoice papers
  - e. Security lapses on invoices / revenue numbers
  - f. Too much storage space required to maintain physical papers



## Our Approach

1. Writer's team discussed with relevant stakeholders to understand the problem and its associated repercussion.
2. Writer's team suggested solution to overcome the hurdles being faced by customer as below.
  - a. Designed a wrapper application over the off the shelf document management solution to help resolve the problem on hand.
  - b. Core DMS to be used to store all documents related to vendor on boarding as well as invoicing and the wrapper application to manage the flow of transaction for sequential approval.

## Solution Provided

1. Built application to manage Vendor authorization workflow with option to upload all related documents
2. Built application to process invoices with multilevel approvals within the application.
3. Provide a handoff (in pre-defined formats) to customer's downstream systems on invoices processed at regular intervals.
4. Generate dashboard for relevant users with relevant information.

## Success Story

1. Invoice processing time reduced by 80%. This has direct impact on revenue collection.
2. Overall improvement in productivity as manual processes were reduced to minimum.
3. Reduction in manpower required to do manual work; resulting in cost saving.